

Sheerweave 4300



- Application:**
- Roller, Roman and Panel Window Blinds
 - Wide Width Windows

- Characteristics:**
- 3200mm

- Technical:**
- Composition: SW4300 is a revolutionary sunscreen manufactured using DOW ECOLIBRIUM bio based plasticizers, rather than fossil fuel based Plasticizers. DOW Ecolibrium does not detract from the sunscreen's appearance or performance, and provides a sustainable green alternative to traditional sunscreens, without the PVC smell.
 - 1/2 Basketweave
 - Openness Factor: approximately 3%
 - UV Blockage 97% approx.
 - Light Fastness: minimum 6 (Blue Scale) Tested to ISO 105-B02:2014
 - Nominal Weight: 510 gsm
 - Nominal Thickness: 0.73mm
 - Lead Free
 - Printable

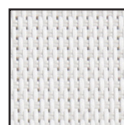
- Protection:**
- Fire Classification: Tested to AS1530 Part II & III, and NFPA 701.
 - Greenguard Gold - accredited for use in sensitive areas eg. schools and healthcare facilities (tested against California section 01359 for low chemical emissions (VOCs))
 - Treated with Microban - giving lifelong Protection
 - Low Odour Emissions (no PVC smell)

- Care:**
- Fabric should be regularly dusted / vacuumed as appropriate. Wipe with water and mild detergent. Do not roll up when fabric is damp.

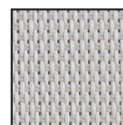
Colour Range *



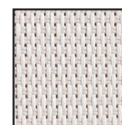
Sheerweave 4300



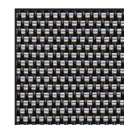
white



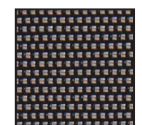
white stone



sandstone



slate stone



charcoal gold



charcoal

Sheerweave 4300



Solar Optical Properties: Fabrics installed internally zero-degree profile angle

Colour	Solar Optical Properties				Shading Coefficient	
	Ts	Rs	As	Tv	3mm CL	6mm CL
White	11	76	13	10	0.25	0.24
White Stone	10	60	30	11	0.33	0.32
Sandstone	7	41	52	8	0.50	0.48
Charcoal Gold	5	19	76	7	0.63	0.60
Slate Stone	6	11	83	7	0.69	0.66
Charcoal	4	3	93	5	0.73	0.69

Ts: Solar Transmittance

Rs: Solar Reflectance

As: Solar Absorptance

Tv: Visual Transmittance

3mm CL: 3mm Clear Glass

6mm CL: 6mm Clear Glass